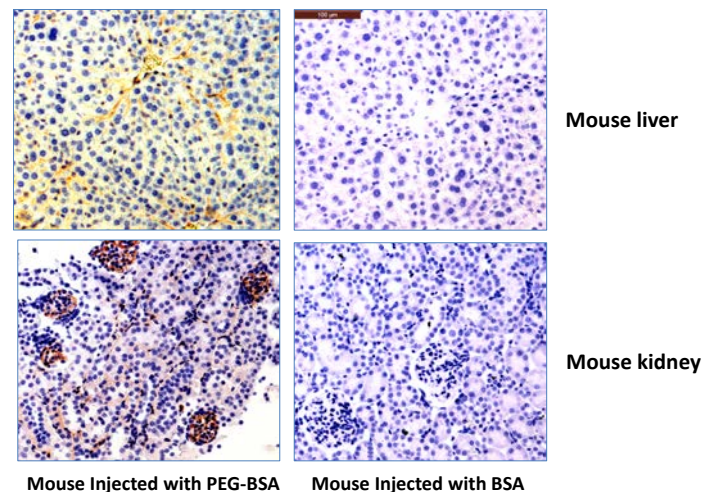
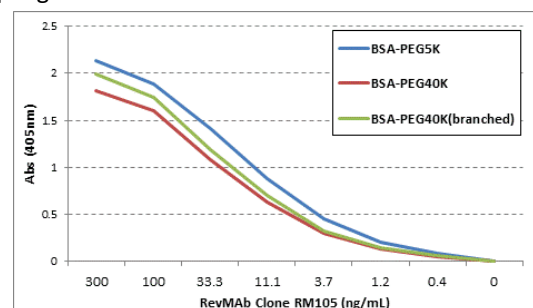


Certificate of Analysis

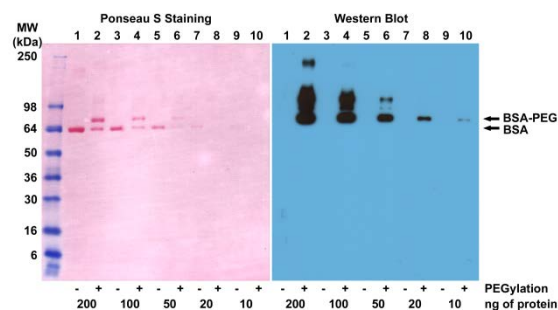
Product:	Rabbit Monoclonal Antibody Anti-PEG (methoxy group) Rabbit Monoclonal Antibody, Clone RM105
Catalog No.:	31-1008-00
Lot No.:	
Clone	RM105
Specificity	This antibody reacts to the methoxy group of Polyethylene glycol (PEG). It is specific for methoxypolyethylene glycol.
Application:	ELISA, Immunohistochemistry, Immunocytochemistry, Western Blot, Immunoprecipitation, Flow Cytometry,
Immunogen:	KLH-PEG with terminal methoxy group
Purity:	Protein A affinity purified from an animal origin-free and protein-free culture supernatant
Size:	100 µg
Concentration:	1.0 mg/mL
Buffer:	50% Glycerol/PBS with 1% BSA and 0.09% sodium azide
Usage:	ELISA: 0.01µg/mL – 0.3µg/mL IHC: 0.5µg/mL – 2µg/mL WB: 0.1µg/mL – 1µg/mL
Storage and Stability:	Stable for 1 Year at -20.0°C from date of receipt.
Country of Origin:	U.S.A.
Intended Use:	For Research Use Only Not for Diagnostic or Therapeutic Use



Immunohistochemistry of mouse liver and kidney using 0.5µg/mL of RevMAB anti-PEG Clone RM105. The mouse was injected with PEG-BSA or BSA for 3 hours before sampling.



ELISA of three different PEGylated BSAs using anti-PEG RevMAB clone RM105, followed by an AP conjugated goat anti-rabbit IgG.



Western blot of BSA and PEGylated BSA (mPEG 5 kDa) using 0.1µg/mL of anti-PEG RevMAB clone RM105.