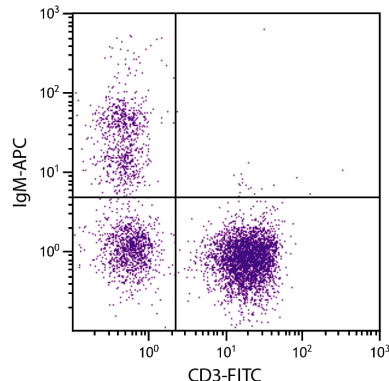




## Mouse Anti-Chicken IgM

Cat. No.	Format	Size
8310-01	Purified (UNLB)	0.5 mg
8310-02	Fluorescein (FITC)	0.5 mg
8310-08	Biotin (BIOT)	0.5 mg
8310-09	R-phycoerythrin (PE)	0.1 mg
8310-11	Allophycocyanin (APC)	0.1 mg
8310-13	Spectral Red® (SPRD)	0.1 mg
8310-31	Alexa Fluor® 647 (AF647)	0.1 mg



Chicken peripheral blood lymphocytes were stained with Mouse Anti-Chicken IgM-APC (SB Cat. No. 8310-11) and Mouse Anti-Chicken CD3-FITC (SB Cat. No. 8200-02).

### Overview

<b>Clone</b>	M-1
<b>Isotype</b>	Mouse (BALB/c) IgG <sub>2b</sub> K
<b>Immunogen</b>	Affinity purified chicken Ig or isolated lymphocytes
<b>Specificity</b>	Chicken/Turkey IgM; Mr 820–950 kDa
<b>Alternate Name(s)</b>	N/A

### Applications

FC – Quality tested <sup>2,3,7-20</sup>  
 ELISA – Quality tested  
 FLISA – Quality tested  
 IHC-FS – Reported in literature <sup>2-4</sup>  
 ICC – Reported in literature <sup>1</sup>  
 IP – Reported in literature <sup>1,2,5</sup>  
 Stim – Reported in literature <sup>6</sup>

### Working Dilutions

<b>Flow Cytometry</b>	FITC and BIOT conjugates	≤ 1 µg/10 <sup>6</sup> cells
	APC, PE, SPRD, and AF647 conjugates	≤ 0.2 µg/10 <sup>6</sup> cells
	For flow cytometry, the suggested use of these reagents is in a final volume of 100 µL	
<b>FLISA</b>	FITC conjugate	1:100 – 1:400
	PE, APC, and AF647 conjugates	≤ 1 µg/mL
<b>ELISA</b>	BIOT conjugate	1:5,000 – 1:10,000
<b>Other Applications</b>	Since applications vary, you should determine the optimum working dilution for the product that is appropriate for your specific need.	

**For Research Use Only. Not for Diagnostic or Therapeutic Use.**

## Handling and Storage

- The purified (UNLB) antibody is supplied as 0.5 mg of purified immunoglobulin in 1.0 mL of borate buffered saline, pH 8.2. *No preservatives or amine-containing buffer salts added.* Store at 2-8°C.
- The fluorescein (FITC) conjugate is supplied as 0.5 mg in 1.0 mL of PBS/NaN<sub>3</sub>. Store at 2-8°C.
- The biotin (BIOT) conjugate is supplied as 0.5 mg in 1.0 mL of PBS/NaN<sub>3</sub>. Store at 2-8°C.
- The R-phycoerythrin (PE) and allophycocyanin (APC) conjugates are supplied as 0.1 mg in 1.0 mL of PBS/NaN<sub>3</sub> and a stabilizing agent. Store at 2-8°C. **Do not freeze!**
- The Spectral Red® (SPRD) conjugate is supplied as 0.1 mg in 1.0 mL of PBS/NaN<sub>3</sub> and a stabilizing agent. Store at 2-8°C. **Do not freeze!**
- The Alexa Fluor® 647 (AF647) conjugate is supplied as 0.1 mg in 0.2 mL PBS/NaN<sub>3</sub>. Store at 2-8°C.
- Protect fluorochrome-conjugated forms from light. Reagents are stable for the period shown on the label if stored as directed.

## Warning

Some reagents contain sodium azide. Please refer to product specific SDS.

## References

1. Chen CH, Lehmeier JE, Cooper MD. Evidence for an IgD homologue on chicken lymphocytes. *J Immunol.* 1982;129:2580-5. (Immunogen, IP, ICC)
2. Ekino S, Riwar B, Kroese FG, Schwander EH, Koch G, Nieuwenhuis P. Role of environmental antigen in the development of IgG<sup>+</sup> cells in the bursa of fabricius. *J Immunol.* 1995;155:4551-8. (FC, IP, IHC-FS)
3. Schusser B, Collarini EJ, Yi H, Izquierdo SM, Fesler J, Pedersen D, et al. Immunoglobulin knockout chickens via efficient homologous recombination in primordial germ cells. *Proc Natl Acad Sci USA.* 2013;110:20170-5. (IHC-FS, FC)
4. Bader SR, Kothlow S, Trapp S, Schwarz SC, Philipp H, Weigend S, et al. Acute parietic syndrome in juvenile White Leghorn chickens resembles late stages of acute inflammatory demyelinating polyneuropathies in humans. *J Neuroinflammation.* 2010;7:7. (IHC-FS, FC)
5. Alinikula J, Nera K, Junttila S, Lassila O. Alternate pathways for Bcl6-mediated regulation of B cell to plasma cell differentiation. *Eur J Immunol.* 2011;41:2404-13. (IP)
6. Viertboeck BC, Schweinsberg S, Hanczaruk MA, Schmitt R, Du Pasquier L, Herberg FW, et al. The chicken leukocyte receptor complex encodes a primordial, activating, high-affinity IgY Fc receptor. *Proc Natl Acad Sci USA.* 2007;104:11718-23. (Stim)
7. Wang YW, Cherian G, Sunwoo HH, Sim JS. Dietary polyunsaturated fatty acids significantly affect laying hen lymphocyte proliferation and immunoglobulin G concentration in serum and egg yolk. *Can J Anim Sci.* 2000;80:597-604. (FC)
8. Selvaraj RK, Cherian G. Dietary n-3 fatty acids reduce the delayed hypersensitivity reaction and antibody production more than n-6 fatty acids in broiler birds. *Eur J Lipid Sci Technol.* 2004;106:3-10. (FC)
9. Selvaraj RK, Cherian G. Changes in delayed type hypersensitivity, egg antibody content and immune cell fatty acid composition of layer birds fed conjugated linoleic acid, n-6 or n-3 fatty acids. *Can J Anim Sci.* 2004;84:221-8. (FC)
10. Chowdhury SR, Smith TK, Boermans HJ, Woodward B. Effects of feed-borne Fusarium mycotoxins on hematology and immunology of laying hens. *Poult Sci.* 2005;84:1841-50. (FC)
11. Nera K, Alinikula J, Terho P, Narvi E, Törnquist K, Kurosaki T, et al. Ikaros has a crucial role in regulation of B cell receptor signaling. *Eur J Immunol.* 2006;36:516-25. (FC)
12. Yang SY, Fugmann SD, Schatz DG. Control of gene conversion and somatic hypermutation by immunoglobulin promoter and enhancer sequences. *J Exp Med.* 2006;203:2919-28. (FC)
13. Cook AJ, Raftery JM, Lau KK, Jessup A, Harris RS, Takeda S, et al. DNA-dependent protein kinase inhibits AID-induced antibody gene conversion. *PLoS Biol.* 2007;5(4):e80. (FC)
14. Yang SY, Fugmann SD, Gramlich HS, Schatz DG. Activation-induced cytidine deaminase-mediated sequence diversification is transiently targeted to newly integrated DNA substrates. *J Biol Chem.* 2007;282:25308-13. (FC)
15. Janardhana V, Broadway MM, Bruce MP, Lowenthal JW, Geier MS, Hughes RJ, et al. Prebiotics modulate immune responses in the gut-associated lymphoid tissue of chickens. *J Nutr.* 2009;139:1404-9. (FC)
16. Petkov DI, Linnemann EG, Kapczynski DR, Sellers HS. Identification and characterization of two distinct bursal B-cell subpopulations following infectious bursal disease virus infection of White Leghorn chickens. *Avian Dis.* 2009;53:347-55. (FC)
17. Luo J, Zhang H, Teng M, Fan J, You L, Xiao Z, et al. Surface IgM on DT40 cells may be a component of the putative receptor complex responsible for the binding of infectious bursal disease virus. *Avian Pathol.* 2010;39:359-65. (FC)
18. Jankowski J, Zduńczyk Z, Sartowska K, Tykałowski B, Stenzel T, Wróblewska M, et al. Metabolic and immune response of young turkeys originating from parent flocks fed diets with inorganic or organic selenium. *Pol J Vet Sci.* 2011;14:353-8. (FC, Turkey Reactivity)
19. Levkut M, Revajová V, Lauková A, Ševčíková Z, Spišáková V, Faixová Z, et al. Leukocytic responses and intestinal mucin dynamics of broilers protected with *Enterococcus faecium* EF55 and challenged with *Salmonella* Enteritidis. *Res Vet Sci.* 2012;93:195-201. (FC)
20. Revajová V, Slaminková Z, Grešáková L, Levkut M. Duodenal morphology and immune responses of broiler chickens fed low doses of deoxynivalenol. *Acta Vet. Brno.* 2013;82:337-42. (FC)

Alexa Fluor® 488, 647, 700 and Pacific Blue™ are provided under an agreement between Molecular Probes, Inc. (a wholly owned subsidiary of Invitrogen Corporation), and Southern Biotechnology Associates, Inc., and the manufacture, use, sale or import of this product may be subject to one or more U.S. patents, pending applications, and corresponding non-U.S. equivalents, owned by Molecular Probes, Inc. The purchase of this product conveys to the buyer the non-transferable right to use the purchased amount of the product and components of the product in research conducted by the buyer (whether the buyer is an academic or for-profit entity). The buyer cannot sell or otherwise transfer (a) this product (b) its components or (c) materials made using this product or its components to a third party or otherwise use this product or its components or materials made using this product or its components for Commercial Purposes. Commercial Purposes means any activity by a party for consideration and may include, but is not limited to: (1) use of the product or its components in manufacturing; (2) use of the product or its components to provide a service, information, or data; (3) use of the product or its components for therapeutic, diagnostic or prophylactic purposes; or (4) resale of the product or its components, whether or not such product or its components are resold for use in research. For information on purchasing a license to this product for any other use, contact Molecular Probes, Inc., Business Development, 29851 Willow Creek Road, Eugene, OR 97402, USA, Tel: (541) 465-8300. Fax: (541) 335-0504.

TB8310  
09-Jul-18

**Corporate Offices:** 160 Oxmoor Blvd • Birmingham, AL 35209 • USA **Mailing Address:** P.O. Box 26221 • Birmingham, AL 35260 • USA

**Tel:** 205.945.1774 • U.S. and Canada: 800.722.2255 • **Fax:** 205.945.8768

**Email:** [info@southernbiotech.com](mailto:info@southernbiotech.com) • **Website:** [www.southernbiotech.com](http://www.southernbiotech.com)