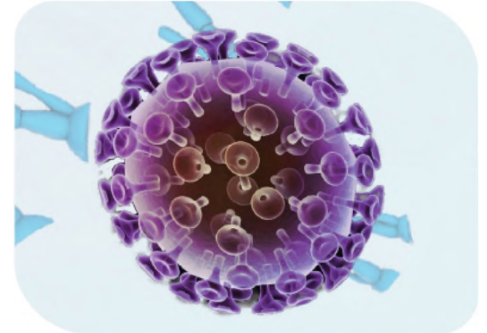




COVID-19 Research Reagents

ProSci Inc. is the **leading supplier in SARS-CoV-2 antibodies and proteins**. ProSci enhances research efforts globally to understand this new virus and its health effects through its portfolio of SARS-CoV-2 antibodies, antigens, and other reagents related to cellular entry such as ACE2, TMPRSS2, and furin.

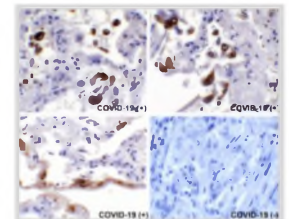
We have SARS-CoV-2 recombinant proteins, COVID-19 patient sample validated antibodies, and are actively developing new products to facilitate coronavirus research.



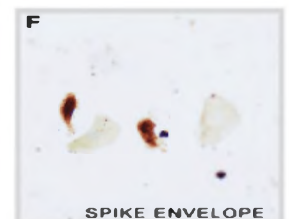
Select COVID-19 Patient Validated Antibodies

Target	Cat. No.	Type	Host	Reactivity	Tested Applications
Spike Antibody	3525	Polyclonal	Rabbit	Virus	E, WB, IHC, IF
Spike S1 Antibody	9083	Polyclonal	Rabbit	Virus	E, WB, IF, IHC
Spike S2 Antibody	9123	Polyclonal	Rabbit	Virus	E, WB, IF, IHC
Nucleocapsid Antibody	9103	Polyclonal	Rabbit	Virus	E, WB, IHC
Nucleocapsid Antibody	35-579	Monoclonal	Mouse	Virus	E, WB, IF
Envelope Antibody	3531	Polyclonal	Rabbit	Virus	E, IHC, IF
Envelope Antibody	9169	Polyclonal	Rabbit	Virus	E, IHC
Membrane Antibody	9165	Polyclonal	Rabbit	Virus	E, WB, IHC
3CL-PRO (NSP5) Antibody	9153	Polyclonal	Rabbit	Virus	E, WB, IHC
NSP7 Antibody	9155	Polyclonal	Rabbit	Virus	E, WB, IHC
NSP8 Antibody	9159	Polyclonal	Rabbit	Virus	E, WB, IHC
NSP9 Antibody	9161	Polyclonal	Rabbit	Virus	E, WB, IHC
NSP10 Antibody	9179	Polyclonal	Rabbit	Virus	E, WB, IHC
NSP13 (Helicase) Antibody	9181	Polyclonal	Rabbit	Virus	E, WB, IHC
NSP13 (Helicase) Antibody	9183	Polyclonal	Rabbit	Virus	E, WB, IHC
NSP14 (ExoN) Antibody	9185	Polyclonal	Rabbit	Virus	E, IHC

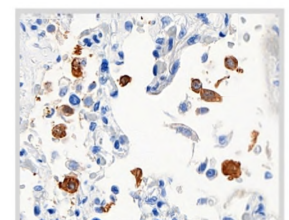
For a complete list of SARS-CoV-2 research product portfolio, visit us at prosci-inc.com



SARS-CoV-2 Spike Antibody
Cat. No. 3525
IHC analysis of spike in COVID-19 patient lung.



SARS-CoV-2 Envelope Antibody
Cat. No. 3531
IHC analysis of envelope protein in COVID-19 patient lung.
(Nuovo et al., 2020)



SARS-CoV-2 Nucleocapsid Antibody
Cat. No. 9099
IHC analysis of nucleocapsid in COVID-19 patient lung.

ProSci Incorporated

12170 Flint Place, Poway, CA 92064, USA

prosci-inc.com | info@prosci-inc.com | Phone: (858) 513 2638

Biolinkk

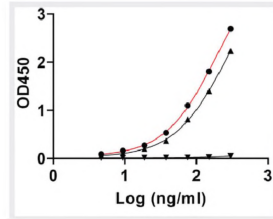
Off. No. 412, Durga Chamber, Karol Bagh, Delhi Pin: 110005 (India)

biolinkk.com | customerservice@biolinkk.com | Tel: +9111-4503-5753

Select SARS-CoV-2 Variant Proteins

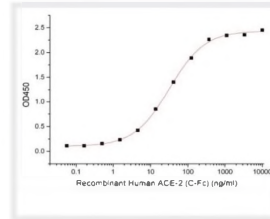
Variant	Mutations	Source	Cat. No.
UK 501Y.V1	N501Y	Mammalian Cells	11-064
South Africa 501Y.V2	K417N, E484K, N501Y	Mammalian Cells	11-065
Brazil 501Y.V3	K417T, E484K, N501Y	Mammalian Cells	11-066
D614G	D614G	Human Cells	92-748

For a complete list of SARS-CoV-2 research product portfolio, visit us at prosci-inc.com



UK Variant (B.1.1.7) S RBD (N501Y)
Recombinant Protein
Cat. No. 11-064

ACE2 binding with Spike Variants



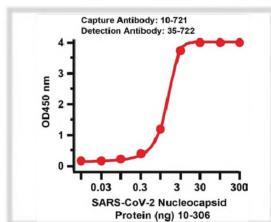
SARS-CoV-2 S-trimer (D614G)
Recombinant Protein
Cat. No. 92-748

Immobilized S-trimer binding with ACE2

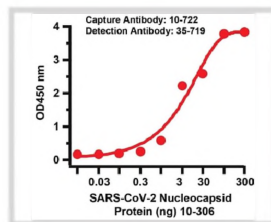
Select SARS-CoV-2 Matched Antibody Pairs

Target	Set Cat. No.	Capture Cat. No.	Detection Cat. No.
Nucleocapsid	MPN-0001	10-721	35-722
Nucleocapsid	MPN-0002	10-722	35-719
Spike	MPS-0001	10-351	9083-biotin
Spike	MPS-0002	10-350	9083-biotin

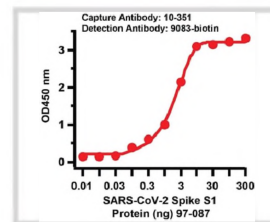
For a complete list of SARS-CoV-2 research product portfolio, visit us at prosci-inc.com



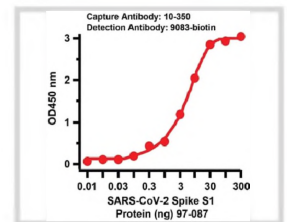
SARS-CoV-2 (COVID-19) Nucleocapsid
Matched Pair
Cat. No. MPN-0001
Capture Cat. No. 10-721 (2ug/ml)
Detection Cat. No. 35-722 (0.5ug/ml)



SARS-CoV-2 (COVID-19) Nucleocapsid
Matched Pair
Cat. No. MPN-0002
Capture Cat. No. 10-722 (2ug/ml)
Detection Cat. No. 35-719 (0.5ug/ml)



SARS-CoV-2 (COVID-19) Nucleocapsid
Matched Pair
Cat. No. MPS-0001
Capture Cat. No. 10-351 (2ug/ml)
Detection Cat. No. 9083-biotin (1ug/ml)



SARS-CoV-2 (COVID-19) Nucleocapsid
Matched Pair
Cat. No. MPS-0002
Capture Cat. No. 10-350 (2ug/ml)
Detection Cat. No. 9083-biotin (1ug/ml)

Select Product Specific Citations

Cell (2021). 184(1):76-91. (ACE2)

Nat Microbiol (2021). 6(1):73-86. (Spike)

Br J Dermatol (2020). 184(1):141-150. (Spike, Envelope)

Ann Diagn Pathol (2020). 48:151565. (Spike, Envelope)

Ann Diagn Pathol (2021). 51:151682. (Various)

ProSci Incorporated

12170 Flint Place, Poway, CA 92064, USA

prosci-inc.com | info@prosci-inc.com | Phone: (858) 513 2638

