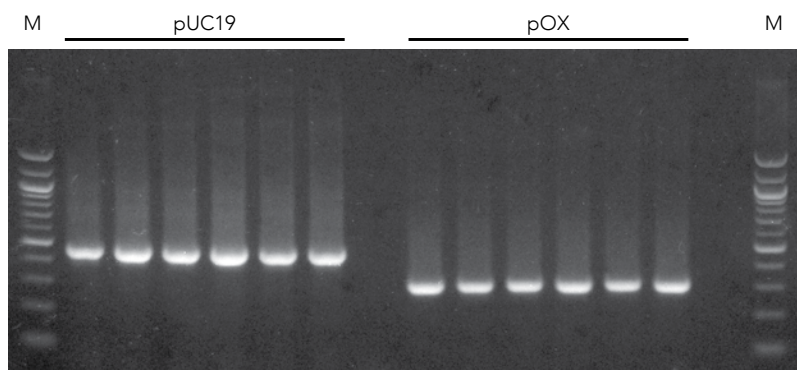


# Complete bisulfite conversion of GC-rich DNA in less than 3 hours

## EZ DNA Methylation-Gold® Kits

- **Consolidated Workflow:** DNA denaturation and bisulfite conversion process in one step.
- **High Yield:** Desulfonation and purification on a spin-column allows elution of bisulfite-converted DNA in as little as 10 µl.
- **Suitable for Various Downstream Applications:** Bisulfite-converted DNA can be robustly PCR amplified for downstream analyses including endonuclease digestion, sequencing, microarrays, etc.

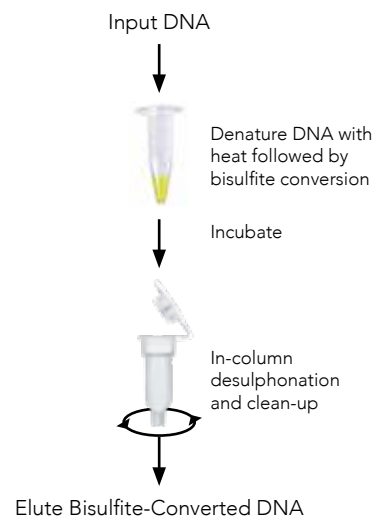
### PCR-Ready Bisulfite Converted DNA



Salmon sperm DNA were spiked with fully (CpG) methylated, linearized pUC19 and pOX plasmid (1.5% w/w) and subjected to bisulfite conversion using the EZ DNA Methylation – Gold® kit. Two amplicons, 453 bp and 314 bp, were successfully amplified from the bisulfite converted pUC19 and pOX plasmid DNA, respectively. The amplicons were analyzed in a 2.0% (w/v) TAE/agarose/EtBr gel. The size marker "M" is a 100 bp ladder.

Product	Cat. No.	Size
EZ DNA Methylation-Gold®	D5030	50 rxns
EZ-96 DNA Methylation-Gold® (shallow-well)	D5032	2 x 96 rxns
EZ-96 DNA Methylation-Gold® (deep-well)	D5033	2 x 96 rxns
EZ-96 EZ DNA Methylation-Gold® Magprep	D5046	4 x 96 rxns

## Streamlined Workflow



Purified DNA is added directly to the CT-conversion reagent. Denaturation and bisulfite conversion are completed in a single-tube reaction. After desulphonation and purification in a spin-column, the purified bisulfite-converted DNA is ready for PCR.

### Specifications


Input 500 pg - 2 µg purified DNA


Conversion Efficiency > 99%


Elution Volume Spin Column: ≥ 10 µl  
96-well: ≥ 15 µl  
Magprep: ≥ 25 µl

DNA Recovery > 75%

Platform Compatibility Swift Biosciences™ Accel-NGS® Methyl-Seq DNA Library Kit  
Agilent SureSelectXT Methyl-Seq Target Enrichment System

 info@zymoresearch.com

 www.zymoresearch.com

 Toll Free: (888) 882-9682