

# INSTRUCTION MANUAL

## **Quick-DNA™ FFPE Kit**

Catalog Nos. **D3067**

### **Highlights**

- Streamlined purification of high-quality FFPE tissue DNA that is ideal for PCR, Next-Gen library prep, enzymatic manipulations, etc.
- Size selection technology; recover total DNA >50 bp or >500 bp.

### **Contents**

Product Contents .....	1
Specifications.....	1
Product Description.....	2
Buffer Preparation .....	3
Protocol.....	3, 4
Ordering Information .....	5
Appendix.....	6
Related Products .....	7

Satisfaction of all Zymo Research products is guaranteed. If you should be dissatisfied with this product please call 1-888-882-9682.

Integrity of kit components is guaranteed for up to one year from date of purchase. Reagents are routinely tested on a lot-to-lot basis to ensure they provide the highest performance and reliability.

For assistance, contact us at [tech@zymoresearch.com](mailto:tech@zymoresearch.com).

## Product Contents

<b>Quick-DNA™ FFPE Kit (Kit Size)</b>	<b>D3067 (50 Preps.)</b>	<b>Storage Temperature</b>
<b>Deparaffinization Solution</b>	20 ml	Room Temp.
<b>Proteinase K &amp; Storage Buffer<sup>1</sup></b>	2 x 5 mg	-20°C (after mixing)
<b>2X Digestion Buffer</b>	5 ml	Room Temp.
<b>Genomic Lysis Buffer<sup>2</sup></b>	50 ml	Room Temp.
<b>Genomic DNA Wash 1</b>	25 ml	Room Temp.
<b>Genomic DNA Wash 2<sup>3</sup> (concentrate)</b>	12 ml	Room Temp.
<b>DNA Elution Buffer</b>	10 ml	Room Temp.
<b>RNase A<sup>4</sup></b>	2 mg	4°C
<b>Zymo-Spin™ IICR Columns</b>	50	Room Temp.
<b>Collection Tubes</b>	100	Room Temp.
<b>Instruction Manual</b>	1	-

<sup>1</sup> The Proteinase K is stable as shipped. Add 260 µl **Proteinase K Storage Buffer** to each **Proteinase K** tube prior to use. The final concentration of **Proteinase K** after the addition of **Proteinase K Storage Buffer** is ~20 mg/ml. Store at -20° C.

<sup>2</sup> *Recommended:* Add beta-mercaptoethanol to 0.5%(v/v) i.e., 250 µl per 50 ml or 500 µl per 100 ml.

<sup>3</sup> Before starting, add 48 ml 100% ethanol (52 ml 95% ethanol) to the 12 ml **Genomic DNA Wash 2** concentrate.

<sup>4</sup> Re-suspend lyophilized RNase A in 300 µl of ddH<sub>2</sub>O. Store at 4° C.

## Specifications

- **Sample Size** – Up to 25 mg tissue from paraffin block or up to four (4) tissue sections (≤20 µm thick) with a total surface area ~20 mm<sup>2</sup>. It is recommended to use 1-2 sections if performing the protocol for the first time. Compatible with fresh/frozen tissue specimens.
- **DNA Recovery** – High quality total DNA ( $A_{260}/A_{280} >1.8$ ) can be eluted into small volumes (i.e., ≥25 µl) allowing for highly concentrated samples. The maximum DNA binding capacity of the provided spin column is ~25 µg.
- **Processing Time** – As little as 4 hours when processing large amounts of tissue. For maximum yields of the highest quality DNA, it is recommended to process samples overnight.
- **Equipment/Reagents** – Microcentrifuge, thermomixer or heat block/bath capable of 55°C and 90°C, isopropanol, beta-mercaptoethanol (optional).

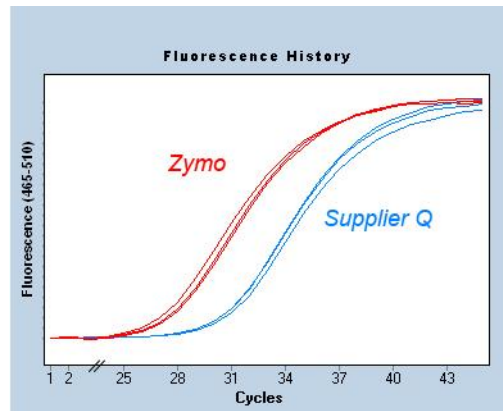
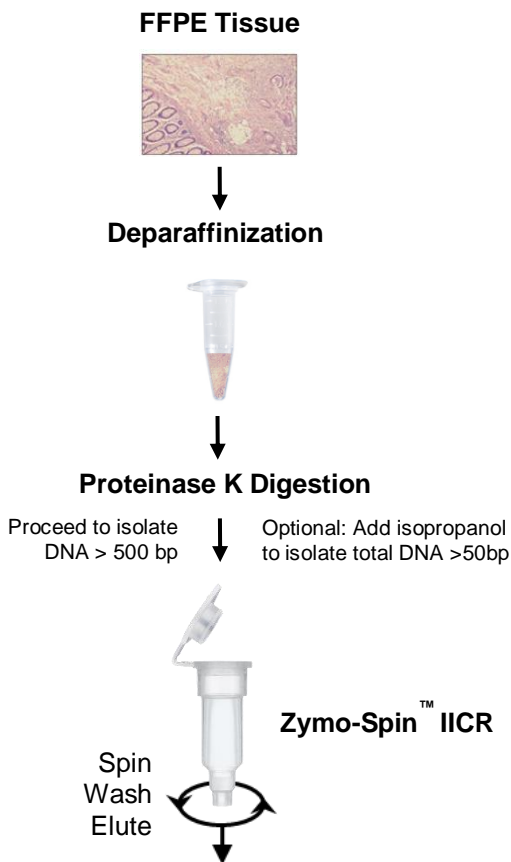
™ Trademarks of Zymo Research Corporation. This product is for research use only and should only be used by trained professionals. It is not intended for use in diagnostic procedures. Some reagents included with this kit are irritants. Wear protective gloves and eye protection. Follow the safety guidelines and rules enacted by your research institution or facility.

### ZYMO RESEARCH CORP.

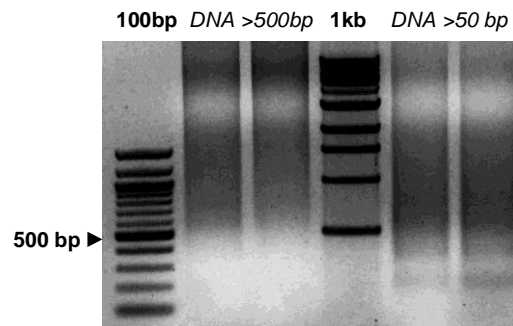
## Product Description

The **Quick-DNA™ FFPE Kit** provides a simple and reliable method for high yield/quality DNA isolation from formalin-fixed, paraffin embedded (FFPE) tissue samples and sections. The unique chemistries of the product have been optimized for maximum recovery of non-crosslinked, ultra-pure DNA without RNA contamination. Simply digest deparaffinized tissues using the provided **Proteinase K**, heat, and then purify the DNA with the *Fast-Spin* columns in the kit. DNA >50 bp or >500 bp can be *selectively* isolated by altering the lysis buffer conditions as given in the protocol. PCR inhibitors are effectively removed during the isolation procedure, and eluted DNA is ideal for PCR, Next-Gen library prep, enzymatic manipulation, etc. Shown below is a schematic and performance overview of the procedure.

For **Assistance**, please contact Zymo Research Technical Support at 1-888-882-9682 or e-mail [tech@zymoresearch.com](mailto:tech@zymoresearch.com).



**Figure 1.** Equivalent amounts of DNA isolated using Zymo and Supplier Q procedures were used for real time PCR analysis. DNA isolated using the **Quick-DNA™ FFPE Kit** consistently yielded lower Ct values as depicted by the amplification curves above.



**Figure 2.** Equivalent amounts of DNA resolved in a 1% agarose/TAE/EtBr gel show binding conditions may be adjusted with the **Quick-DNA™ FFPE Kit** to selectively isolate DNA >50 bp or >500 bp. 100 bp DNA ladder and 1 kb DNA ladder from Zymo Research.

For **Assistance**, please contact Zymo Research Technical Support at 1-888-882-9682 or e-mail [tech@zymoresearch.com](mailto:tech@zymoresearch.com).

**Note:** If using fresh/frozen tissue specimens proceed directly with **Proteinase K Digestion & DNA Isolation** (pg. 4)

**Note:** Xylene may also be used for deparaffinization. See the Appendix on page 6 for instructions.

## **Buffer Preparation**

- ✓ Add 260 µl **Proteinase K Storage Buffer** to reconstitute lyophilized **Proteinase K** at 20 mg/ml. Vortex to dissolve. Store at -20° C.
- ✓ Before starting, add 48 ml 100% ethanol (52 ml 95% ethanol) to the 12 ml **Genomic DNA Wash 2** concentrate.
- ✓ Resuspend lyophilized **RNase A** in 300 µl of ddH<sub>2</sub>O. Store at 4° C.
- ✓ *Recommended:* Add beta-mercaptoethanol (user supplied) to the **Genomic Lysis Buffer** to a final dilution of 0.5%(v/v) i.e., 250 µl per 50 ml.

## **Protocol**

### ***Deparaffinization***

1. Remove (trim) excess paraffin wax from sample and transfer the sample to a 1.5 ml microcentrifuge tube.

**Note:** Up to 25 mg tissue from a paraffin block or up to four (4) tissue sections (≤20 µm thick) with a total surface area ~20 mm<sup>2</sup>. It is recommended to use start with 1-2 sections.

2. Add 400 µl of **Deparaffinization Solution** to the sample. Incubate at 55°C for 1 minute. Vortex briefly.
3. Remove **Deparaffinization Solution** from the sample and proceed to next section.

### ***Tissue Digestion***

1. To the deparaffinized tissue sample (≤ 25 mg) in a microcentrifuge tube, add the following mixture:

H <sub>2</sub> O	45µl
2X Digestion Buffer	45µl
Proteinase K	10µl

**Note:** If the tissue sample is too large for the digestion volume, scale up the digestion to 200 µl while keeping the amount of Proteinase K the same. Double the reagent volumes indicated in Step 1 & 2 of the DNA Purification Protocol (Page 4).

2.	<b><i>Rapid Digestion</i></b>	<b><i>Standard Digestion</i></b>
	Incubate at 55°C for 1-4 hours	Incubate at 55°C overnight (12-16 hrs)

**Note:** The *Rapid Digestion* is recommended for processing slide tissue sections. The *Standard Digestion* ensures maximum yields of DNA from tough-to-lyse (collagen-rich, fibrous, etc.) or large tissue samples.

3. Transfer the digestion to 94°C and incubate for 20 minutes. Once done, add 5 µl of **RNase A**, mix, and incubate an additional 5 minutes at room temperature.

### DNA Purification

1. Add 350  $\mu$ l of **Genomic Lysis Buffer** to the tube and mix thoroughly by vortexing.
2. Add 135  $\mu$ l of isopropanol<sup>1</sup> (user supplied) to the sample and mix thoroughly. Centrifuge at  $\geq 12,000 \times g$  for 1 minute to remove insoluble debris.
3. Transfer the supernatant to a **Zymo-Spin™ IICR Column**<sup>2</sup> in a **Collection Tube**. Centrifuge at  $10,000 \times g$  for 1 minute.
4. Add 400  $\mu$ l of **Genomic DNA Wash 1** to the spin column in a new **Collection Tube**. Centrifuge at  $10,000 \times g$  for 1 minute. Discard the flow-through.
5. Add 700  $\mu$ l of **Genomic DNA Wash 2** to the spin column. Centrifuge at  $\geq 12,000 \times g$  for 1 minute. Discard the flow-through.
6. Add 200  $\mu$ l of **Genomic DNA Wash 2** to the spin column. Centrifuge at  $\geq 12,000 \times g$  for 1 minute.
7. Transfer the **Zymo-Spin™ IICR Column** to a clean microcentrifuge tube. Add  $\geq 50 \mu$ l **DNA Elution Buffer**<sup>3</sup> or water (add  $\geq 100 \mu$ l if sampling 25 mg tissue) to the spin column. Incubate 2-5 minutes at room temperature.
8. Centrifuge at top speed for 30 seconds to elute the DNA.

The eluted DNA can be used immediately for molecular based applications or stored  $\leq -20^{\circ}\text{C}$  for future use.

<sup>1</sup> ssDNA will also be purified if present in the sample upon the addition of isopropanol.

This procedure will isolate total DNA  $> 50$  bp. To isolate only DNA  $> 500$  bp, skip *Step 2*.

FFPE DNA may be highly degraded and DNA  $> 500$  bp may not be present in sample.

<sup>2</sup> The maximum loading volume for the **Zymo-Spin™ Column** is  $\sim 700 \mu$ l.

<sup>3</sup> Elution of DNA from the column is dependent on pH and temperature. If water is used, ensure the pH is  $> 6.0$ . Also, the total yield may be improved by eluting the DNA with Elution Buffer or water pre-equilibrated to  $60-70^{\circ}\text{C}$  or by performing and pooling sequential elutions.

**Ordering Information**

<b>Product Description</b>	<b>Catalog No.</b>	<b>Kit Size</b>
<b>Quick-DNA™ FFPE Kit</b>	D3067	50 Preps.

<b>For Individual Sale</b>	<b>Catalog No.</b>	<b>Amount</b>
<b>Deparaffinization Solution</b>	D3067-1-20	20 ml
<b>Proteinase K &amp; Storage Buffer</b>	D3001-2-5 D3001-2-20	5 mg set 20 mg set
<b>2X Digestion Buffer</b>	D3050-1-5 D3050-1-20	5 ml 20 ml
<b>Genomic Lysis Buffer</b>	D3004-1-50	50 ml
<b>Genomic DNA Wash 1</b>	D3067-2-25	25 ml
<b>Genomic DNA Wash 2 (concentrate)</b>	D3067-3-12	12 ml
<b>DNA Elution Buffer</b>	D3004-4-4 D3004-4-10 D3004-4-50	4 ml 10 ml 50 ml
<b>Zymo-Spin™ IICR Columns</b>	C1078-50 C1078-250	50 250
<b>RNase A</b>	E1008-8	8 mg
<b>Collection Tubes</b>	C1001-50 C1001-500 C1001-1000	50 500 1,000

**ZYMO RESEARCH CORP.**

## **Appendix: Xylene Deparaffinization**

### ***Rapid Deparaffinization (Slide Tissue Sections Only)***

1. Remove (trim) excess paraffin wax from sample and transfer the sample to a 1.5 ml microcentrifuge tube.
2. Add 1 ml xylene (*not provided*) to the sample. Vortex vigorously for 30 seconds and then centrifuge sample at 10,000 x *g* (~10,000 rpm) for 1 minute. Remove and discard the xylene.
3. Wash sample with 1 ml ethanol (95-100%). Vortex vigorously for 30 seconds then centrifuge samples at 10,000 x *g* for 1 minute. Remove and discard ethanol. Repeat this step.
4. Dry the sample using vacuum centrifugation (e.g., SpeedVac or similar) or by heating uncapped tubes at ~37° C for up to 40 minutes.
5. The sample is now ready for **Tissue Digestion** (see page 3).

### ***Standard Deparaffinization (Tissue Samples and Slide Tissue Sections)***

1. Remove (trim) excess paraffin wax from sample and transfer the sample to a 1.5 ml microcentrifuge tube.
2. Add 1 ml xylene (*not provided*) to the sample. Vortex and incubate at room temperature for 1 hour with gentle rocking. Centrifuge, discard supernatant, and repeat this step.

**Note:** Centrifuge at 10,000 x *g* for 1 minute and remove/discard supernatant after washing for the following steps.

3. Wash twice with 1 ml ethanol (100%) for 5 minutes with gentle rocking.
4. Wash twice with 1 ml ethanol (95%) for 5 minutes with gentle rocking.
5. Wash twice with 1 ml ethanol (75%) for 5 minutes with gentle rocking.
6. Wash once with 1 ml ddH<sub>2</sub>O for 5 minutes with gentle rocking. Remove as much water from the sample as possible.
7. The sample is now ready for **Tissue Digestion** (see page 3).

For **Assistance**, please contact Zymo Research Technical Support at 1-888-882-9682 or e-mail [tech@zymoresearch.com](mailto:tech@zymoresearch.com).